

# Idiopathic Scoliosis Surgery

## Advanced Technology

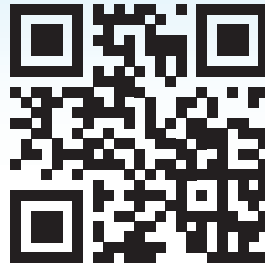
### Stryker Navigation System

This state-of-the-art system provides real-time, CT-based navigation to guide precise placement of pedicle screws.

- Combines 3D imaging with anatomical reference points for accurate surgical planning
- Improves screw placement accuracy and reduces the risk of loosening
- Enables safer, more effective correction of spinal deformity



Our team frequently uses this technology during scoliosis procedures, and physicians from around the world observe and learn from these advanced techniques in our surgical center.



Visit us at [chortho.com](http://chortho.com)

### Locations in:

St. Petersburg, Tampa  
and Lakewood Ranch

Phone: (727) 898-2663

Fax: (727) 568-6836

*Integrity, credentials, commitment, and the use of advanced technology are what make our physicians distinct and the best choice for your child's orthopaedic care!*



Children's Orthopaedic  
and Scoliosis Surgery Associates, LLP  
Your Kids Are Our Kids™

[www.SRS.org](http://www.SRS.org)



Children's Orthopaedic  
and Scoliosis Surgery Associates, LLP  
Your Kids Are Our Kids™



## Understanding Surgical Treatment for Idiopathic Scoliosis

Surgery is generally recommended for scoliosis curves that progress beyond 40 to 45 degrees. Left untreated, these curves can worsen over time and lead to chronic back pain, visible deformity, breathing difficulties, or limitations in daily activities.

Surgical intervention helps correct the curve, stabilize the spine, and prevent further progression. Each case is carefully evaluated to ensure the best approach for the patient's age, curve pattern, and stage of skeletal development.

### Surgical Techniques

#### Pedicle Screws and Rods

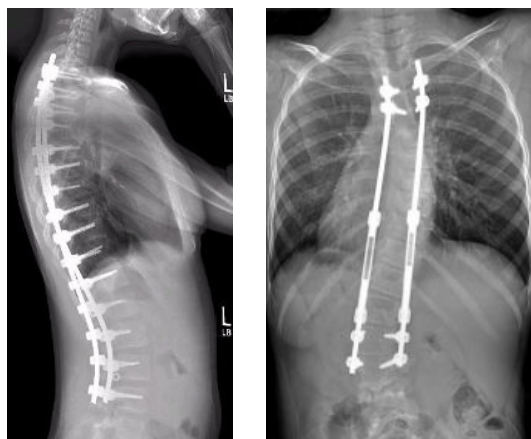
Pedicle screws are used to anchor rods to the spine, providing stability while the bones fuse.

- Screws are placed along multiple levels of the spine, depending on curve severity
- They help correct rotation and alignment in both front-to-back (sagittal) and side-to-side (coronal) planes
- The rods are connected to the screws to hold the spine in proper position during healing

#### Growing Rods

For younger children who are still growing, expandable rods are used.

- These rods are placed along the spine using screws and allow controlled spinal growth
- The rods are lengthened periodically, typically every six months, to support proper alignment while the child continues to grow



Pedicle Screws

Growing Rods

### What to Expect Before and After Surgery

#### Pre-operative Office Visit

- X-rays are taken to evaluate spine flexibility and guide surgical planning
- The surgeon will review the procedure in detail and answer your questions

- A full medical history, including medications and allergies, will be reviewed
- You will be asked to sign surgical consent forms
- Blood donation and a CT scan may be scheduled about a month prior to surgery

#### Pre-operative Hospital Visit

- Routine lab work (blood and urine tests) will be completed
- A hospital tour may be provided to familiarize you with the environment
- You will meet with a pain management specialist to discuss post-surgical care
- Admission will occur on the day of surgery

#### After Surgery

- Hospital stay typically lasts 1 to 3 days but may vary based on your child's recovery needs
- A follow-up appointment is usually scheduled about 3 weeks after surgery
- Post-operative care includes pain management, activity guidance, and follow-up imaging